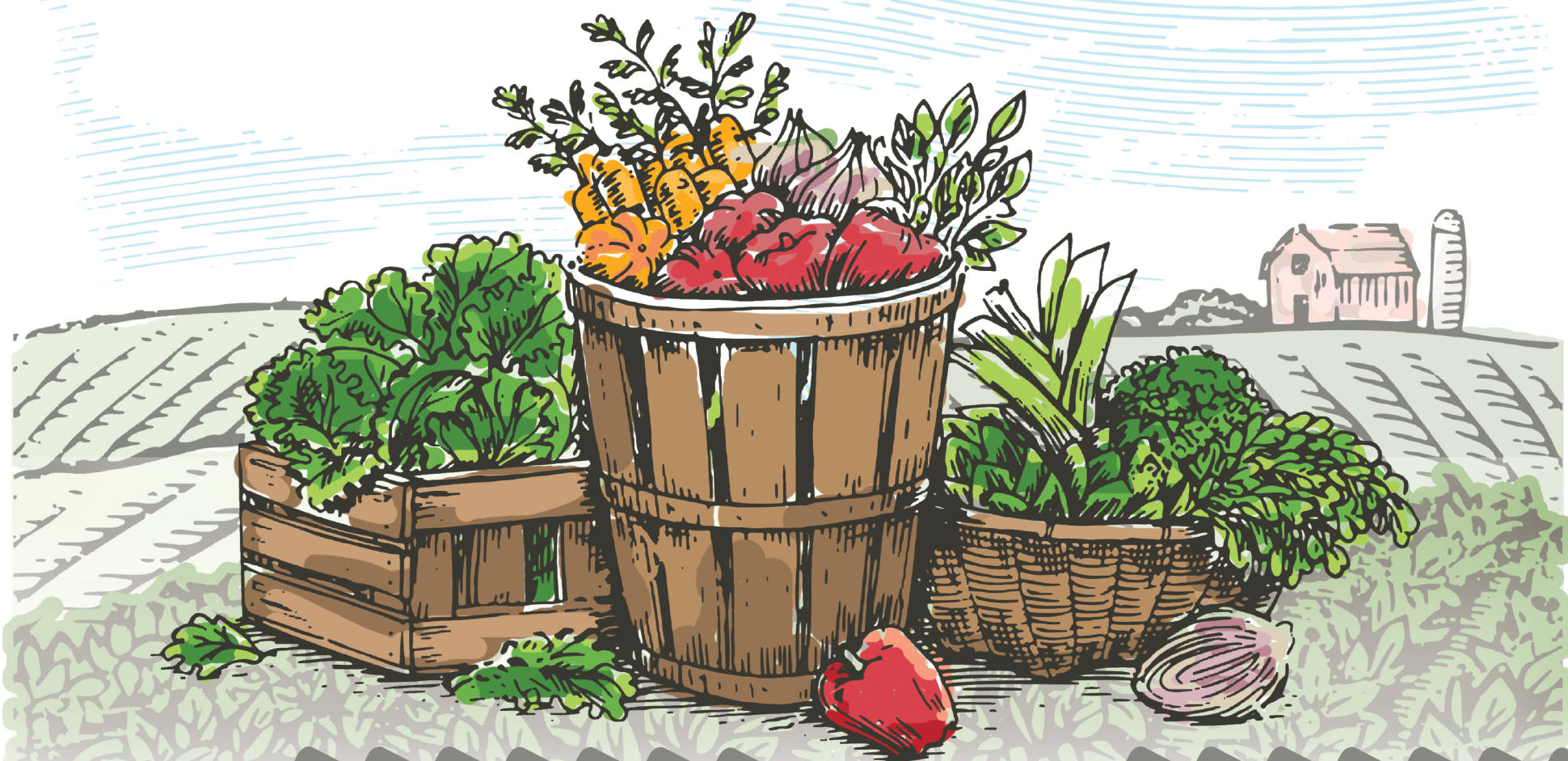


The CHESTERHILL PRODUCE AUCTION Seasonal Calendar



	APRIL	MAY	JUNE	JULY	AUG.	SEPT.	OCT.
APPLES							
ASPARAGUS							
BEANS							
BEANS, HORTICULT.							
BEETS							
BLACKBERRIES							
BLUEBERRIES							
BROCCOLI							
CABBAGE							
CANTALOUPE							
CARROTS							
CAULIFLOWER							
CORN							
CUCUMBER, REG							
CUCUMBER, PCKL							
EGGPLANT							
EGGPLANT, FAIRYTALE							
FLOWERS							
GARLIC							
GOURDS							
GREEN BEANS							
GROUND CHERRIES							
HERBS							
LETTUCE							
LETTUCE, DEERTONG.							
LETTUCE, LEAF							
LETTUCE, ROMAINE							
OKRA							
ONIONS							
ONIONS, CANDY							
ONIONS, GREEN							

	APRIL	MAY	JUNE	JULY	AUG.	SEPT.	OCT.
ONIONS, RED							
PEACHES							
PEARS							
PEAS							
PEAS, SNAP							
PEPPERS							
PEPPERS, BELL							
PEPPERS, HOT							
PEPPERS, WAX							
PLANTS, DECORATIVE							
PLANTS, FRUIT							
PLANTS, VEG.							
POTATOES, RED							
POTATOES, WHITE							
PUMPKINS							
RADISHES							
RAMPS							
RASPBERRIES							
RHUBARB							
SQUASH							
SQUASH, ACORN							
SQUASH, BUTTERNUT							
SQUASH, SPAGHETTI							
SQUASH, SUMMER							
STRAWBERRIES							
SWEET POTATOES							
TOMATOES							
TURNIPS							
WATERMELON							
ZUCCHINI, GOLDEN							
ZUCCHINI, GREEN							

For 15 years, Rural Action has documented the availability of local produce in the Mid-Ohio Valley region through sales at the Chesterhill Produce Auction. This seasonal chart represents the varieties of produce typically available from farmers in Appalachian Ohio and West Virginia from April to October.

Rural Action increases access to healthy local produce by partnering with retailers, hospitals, and schools in food-insecure communities. The Chesterhill Produce Auction, a social enterprise of Rural Action, serves as a market for more than 200 small farms selling local produce, livestock, and wood products.

For more information contact Tom Redfern at 740-677-4047 or tomr@ruralaction.org or visit www.chesterhillproduceauction.com.

KEY: PLENTIFUL (5+ Bushels) AVAILABLE (3-4 Bushels) SPARSE (1-2 Bushels)

Measurement used for chart is the average bushels (or equivalent) for sale at auction (semi-weekly). Data represents three years (2016-2018) at the Chesterhill Produce Auction. Printed in partnership with Sisters Health Foundation and the USDA.

